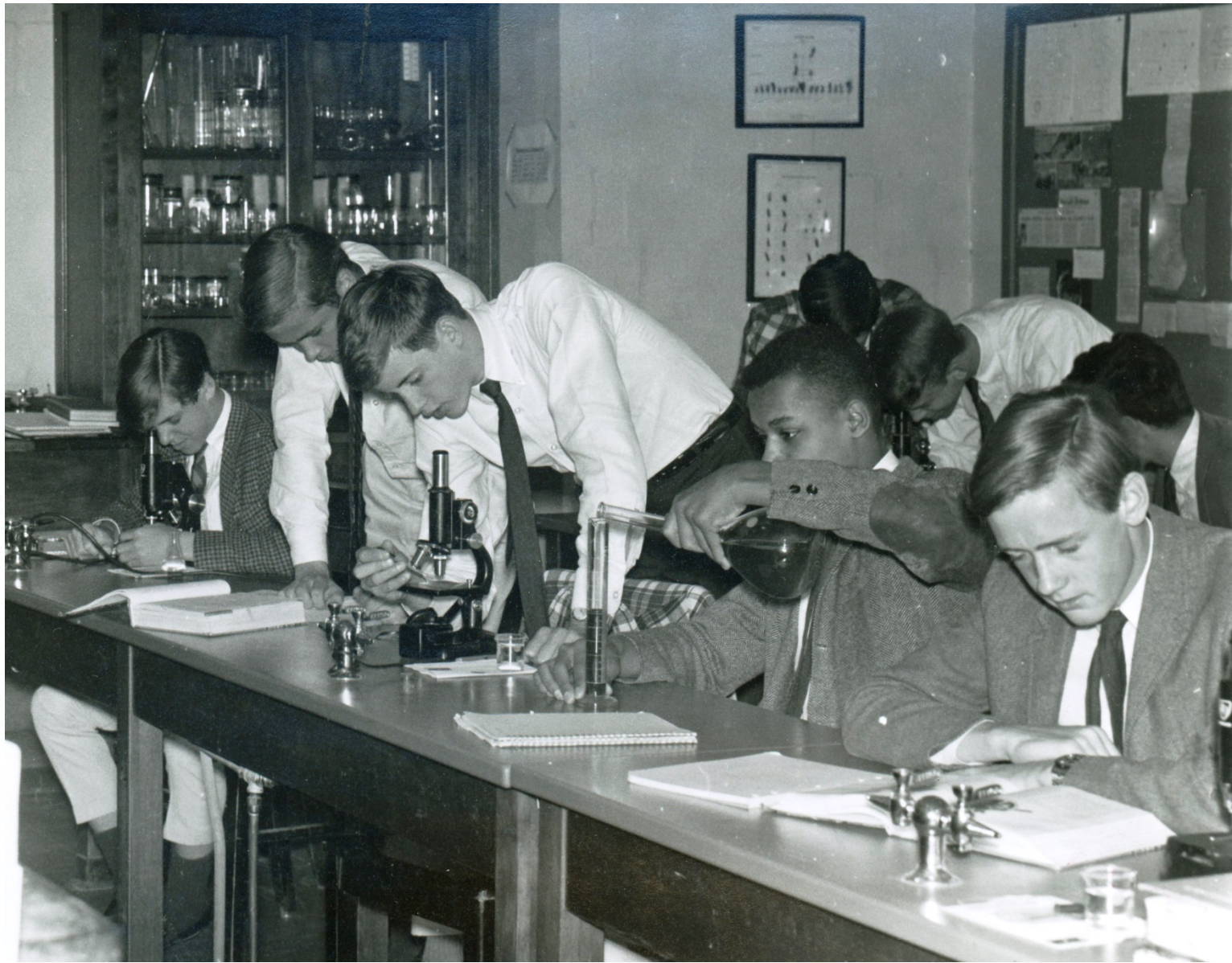


MATH AND SCIENCE IN YEARS PAST

Mathematics and Science formed an essential part of the school curriculum from the earliest days. Those classes occupied a variety of homes, from the Main Building, to the basement of Payson Dormitory, then Memorial after 1950, and the Harris Science Building after 1978. The late 1990s witnessed construction of the new Wachtmeister Mathematics and Science center. This assortment of photographs from the Archives collections covers period from c. 1940 until the late 1970s. Where did you take Chemistry, Physics, and Geometry? How many classrooms and individuals do you recognize?

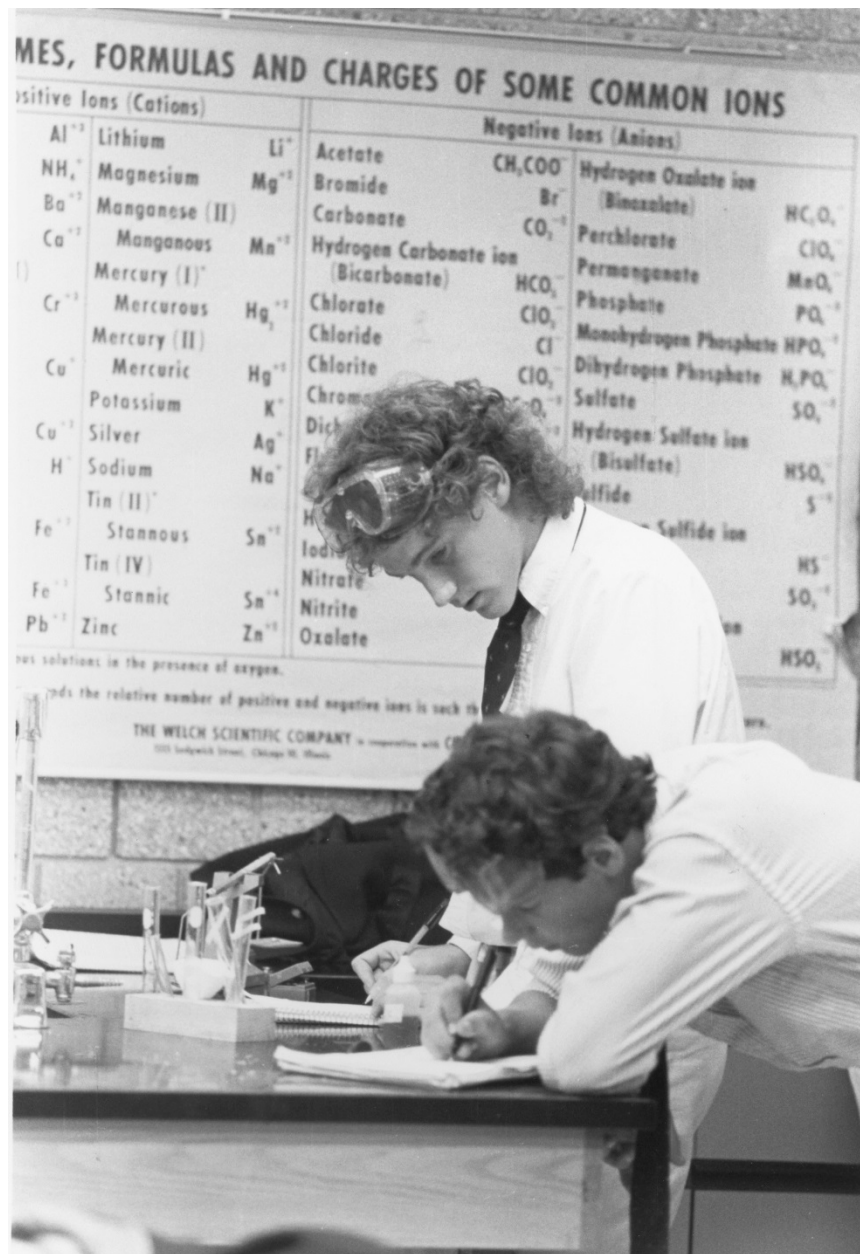


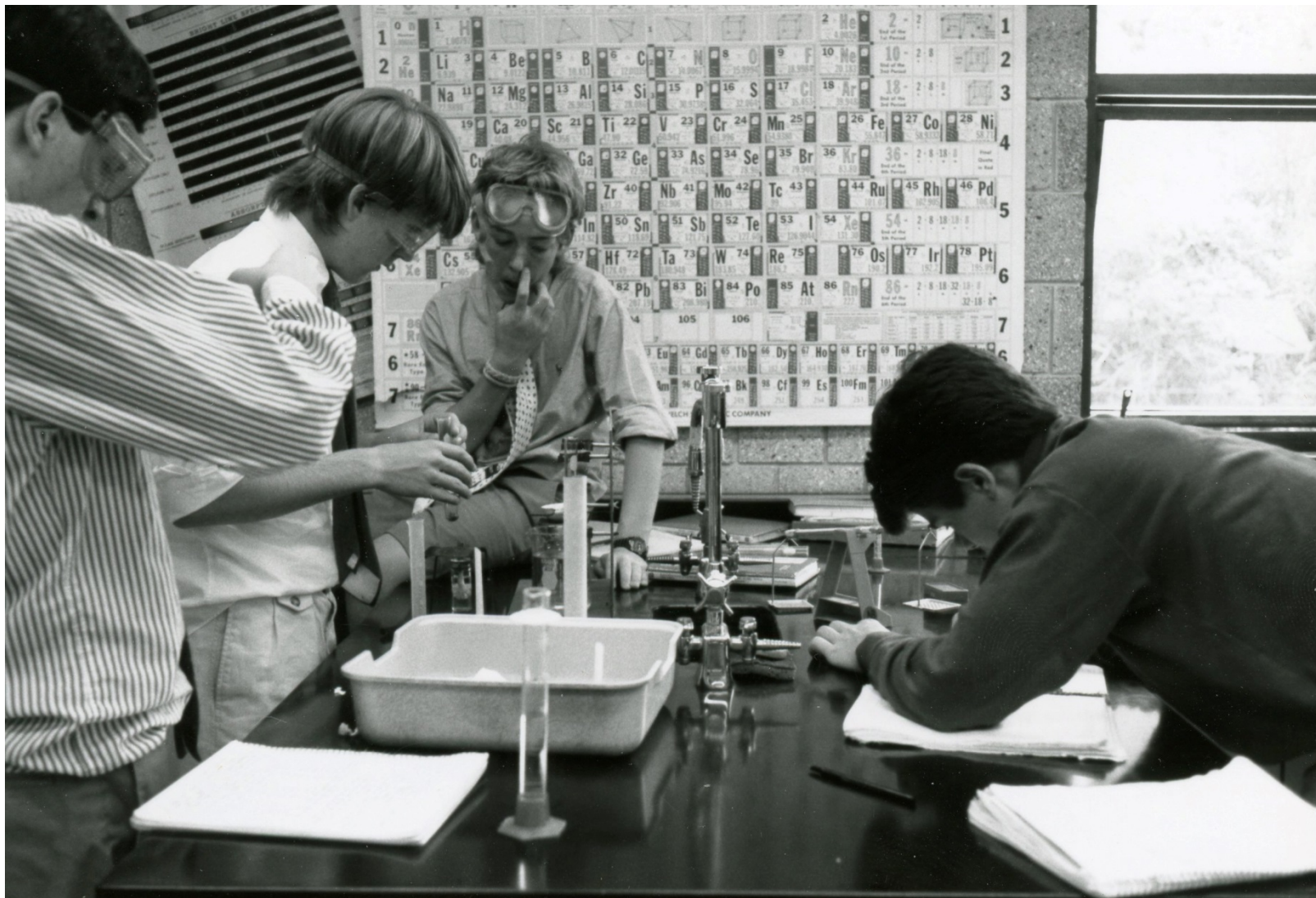


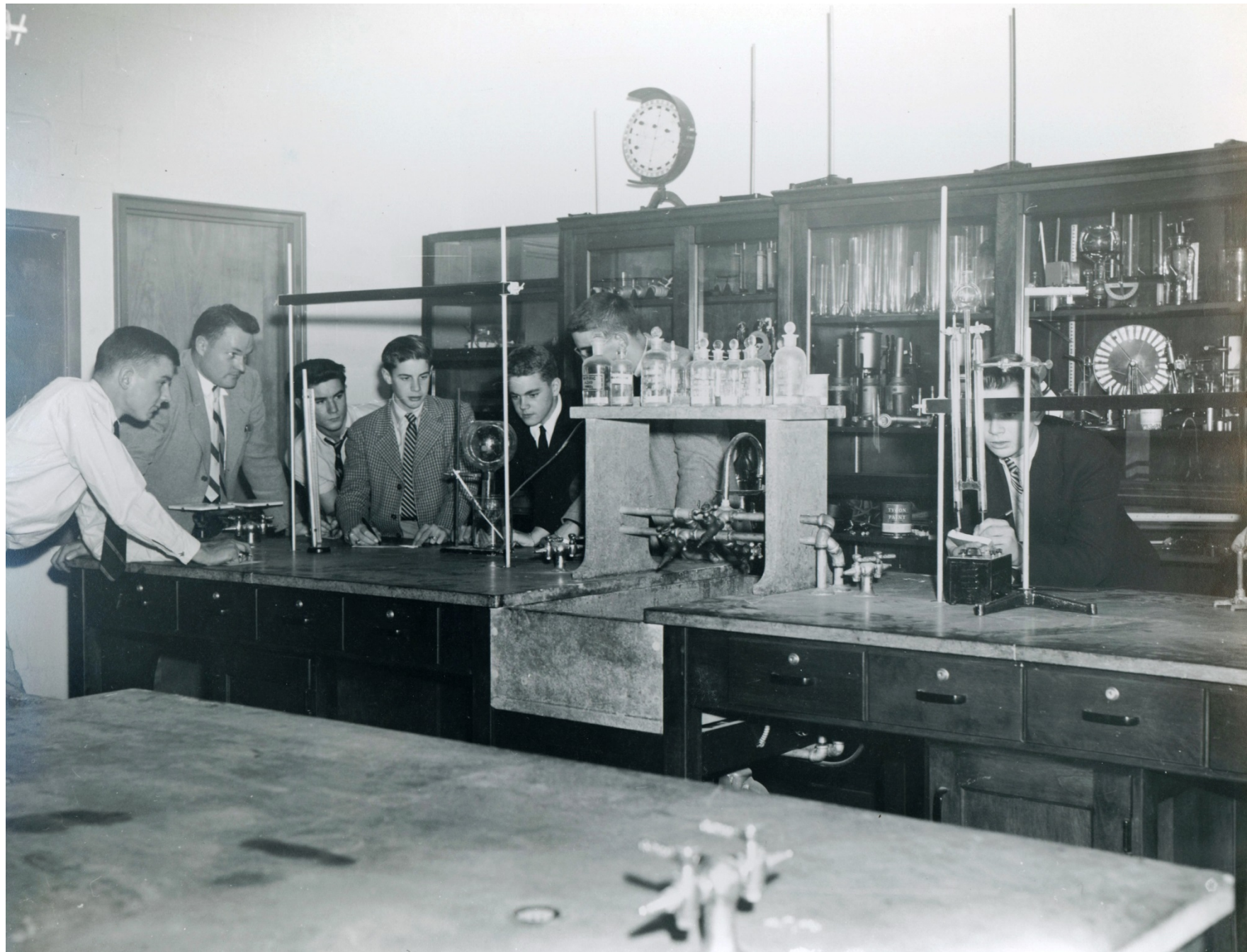


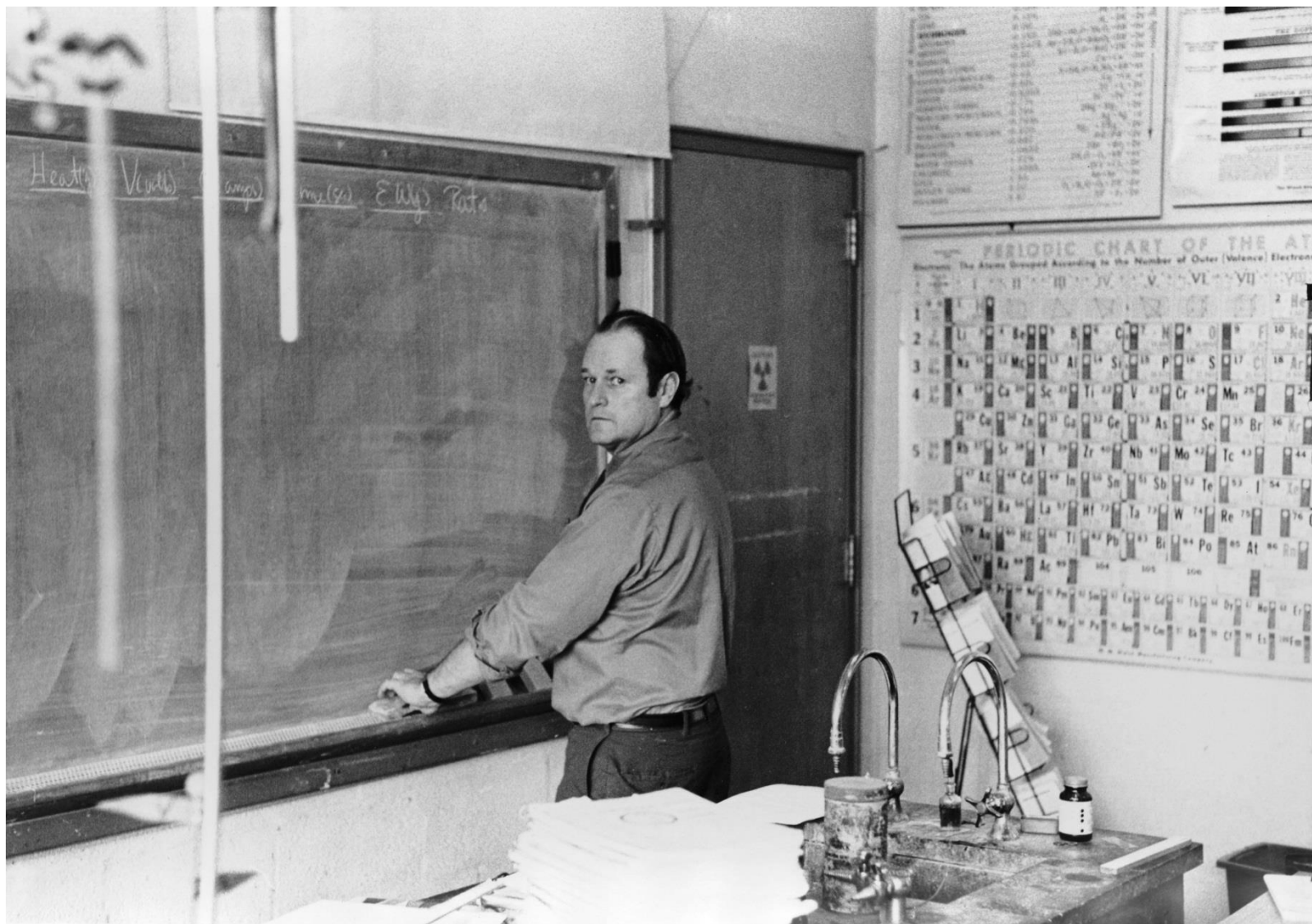




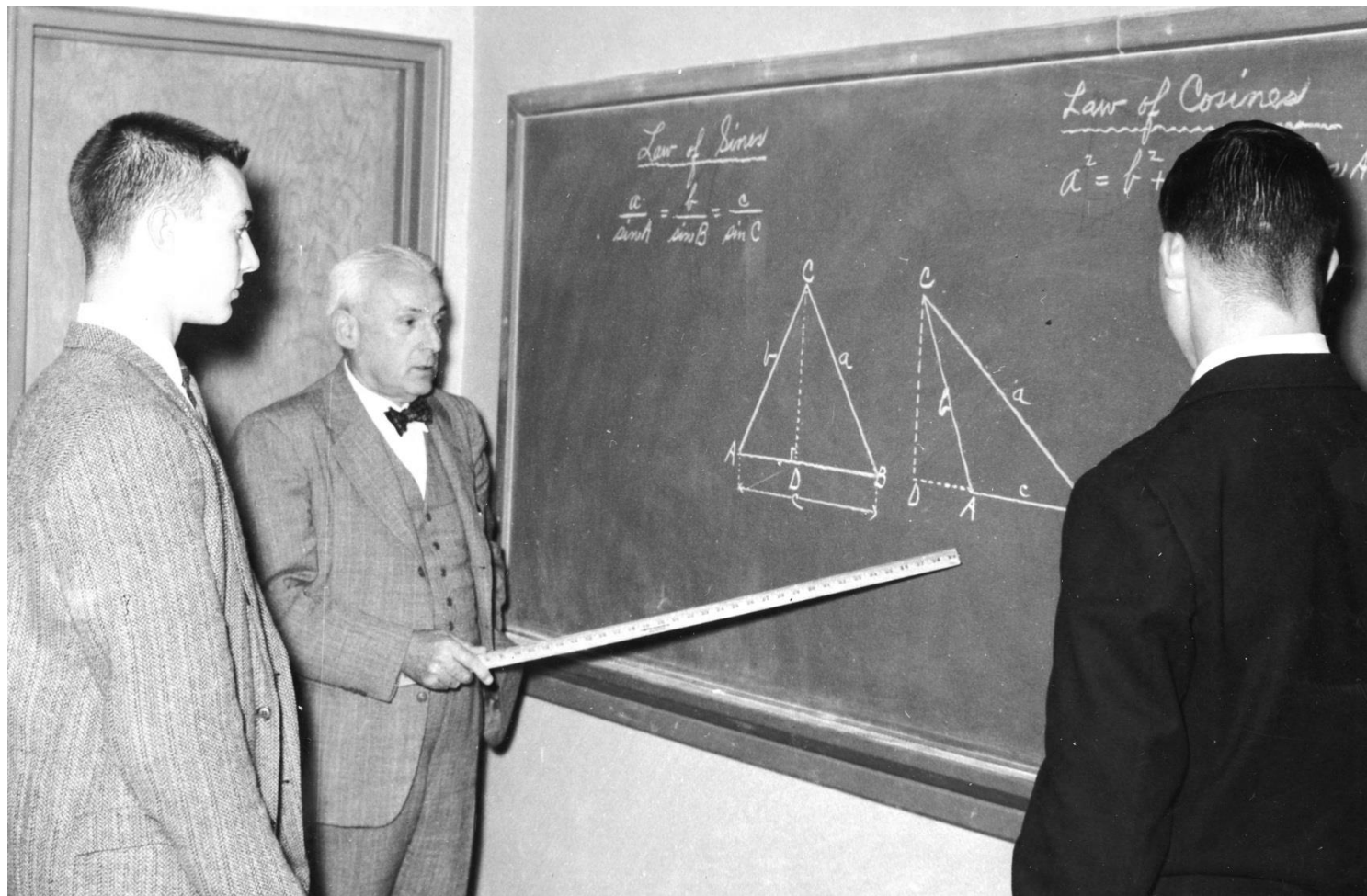




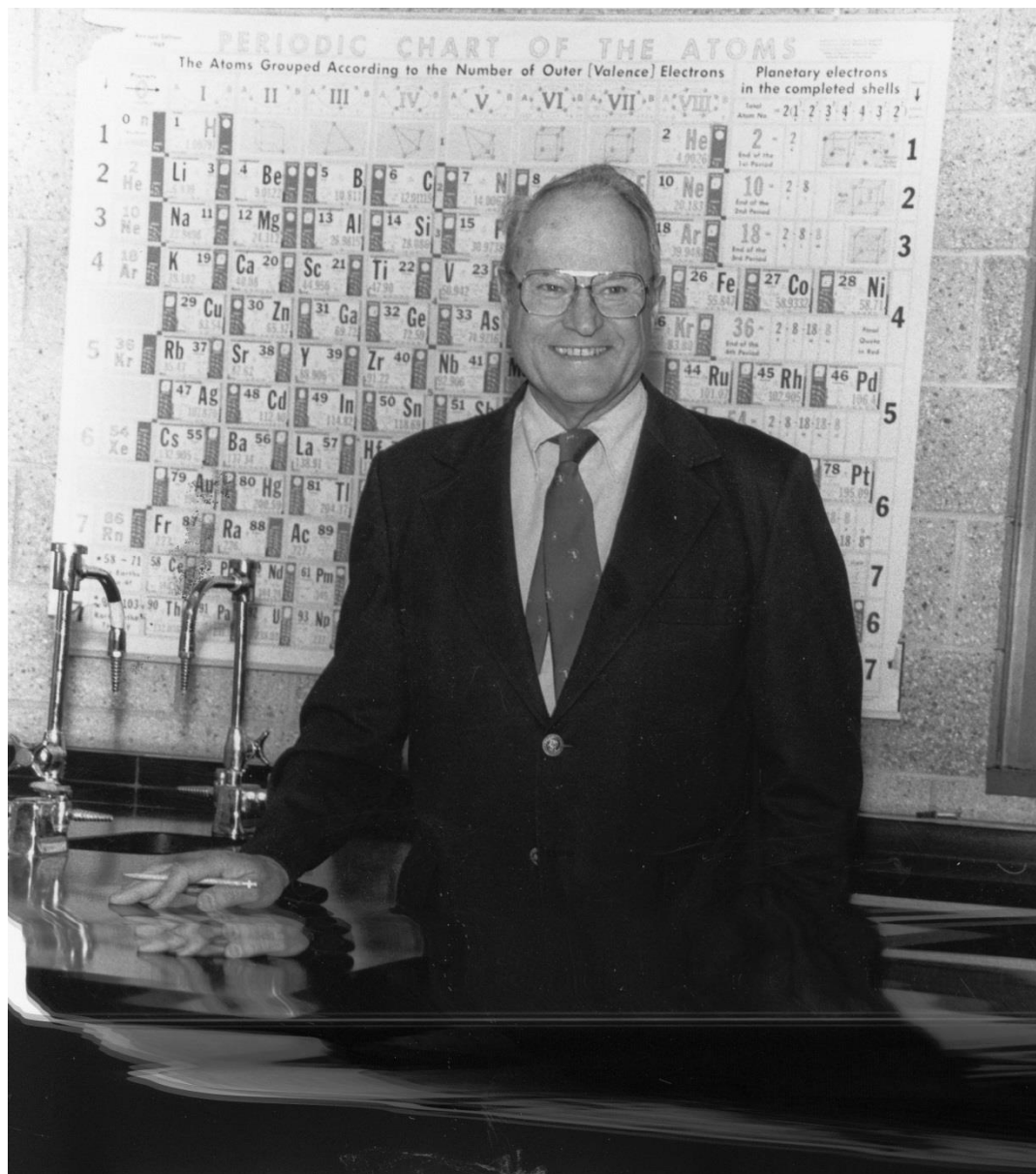


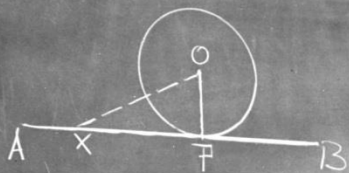












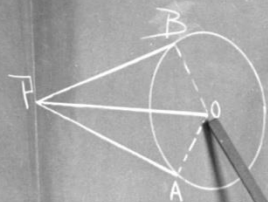
Given: Circle, with MP perpendicular to AB

To prove: MP is tangent to the circle

Proof: From O draw a line

$OX \perp AB$

OX is



Given: PA and PB , tangents from P to the circle whose center is at O , and the line joining P to O

To prove: $PA = PB$, and $\angle APO = \angle BPO$

Proof: Draw OA and OB

PA is $\perp OA$ and PB is $\perp OB$

